

Software For Success

Software For Success

GARMENT CORPORATION OF AMERICA

Featuring

Software
FOR HARD WEAR
by GCA™



Understanding The Benefits of a Uniform Program

Uniforms outfit a worker for the job and help ensure many positive benefits to both the employer and the employee. Businesses and institutions that have established employee uniform programs are usually perceived as employers who care more—more about their product, their service, their employees, and the jobs they do. Here are several reasons for employers to implement the use of uniforms.

- Employee loyalty. Studies have shown that employees in uniform work harder, are absent less and stay with their employers longer than the average worker in their own wardrobe. Uniforms help build employee loyalty and morale, as well as create a sense of pride and “team spirit.”

- Corporate identity. Identification and name-recognition of the employee in uniform with a brand, logo or service is vital in today’s marketplace. The professional appearance of a worker in uniform makes a better impression on customers, too. Plus, the corporate identity of a company logo and colors are good advertising to potential customers.

- Security and public confidence. While helping to establish a corporate image in the community, uniforms also offer security and trust. They help cut down on theft and fraud by identifying who belongs where, as well as who doesn’t belong. This can be vital in assuring public confidence in a company.

- Eliminates hassles in the workplace. No more headaches for employers trying to enforce a dress code and no more employees’ “street apparel” that detracts from job performance, or distracts co-workers from their jobs.

- Creating divisions within a company. Color-coded uniforms and variety of styles can correspond to department or job function, helping to identify who belongs where, as well as reducing inter-departmental “visiting” between workers.

- Less wear-and-tear on personal wardrobe. For most employees, uniforms mean there’s no more indecision about what to wear to work each day, and helps them keep their own wardrobe looking nice, longer.

- Service and supply. Supplying employers and their employees with the right garment in the right fit is what we do best. Thanks to advanced inventory and control technologies, we can provide the garments needed, when and where they’re needed, with fast and efficient delivery.

The benefits of a uniform program are many, but the greatest benefit of all is the ability to provide a custom look on a “ready-to-wear” budget. Within these pages are the garments to achieve that goal.

CAUTION: The garments described herein offer no protection from molten metal, sparks, flames or caustic chemicals.

NOTE: Garment colors printed here may not be exact. Please consult fabric swatch book for complete accuracy. The Cotton logo that appears in this catalog is a registered trademark of Cotton Incorporated.

Table of Contents

SHIRTS

Poplin	3
Striped Industrial	3
Executive Shirt	4
No-Pocket/Food Handler	4
Micro-Check	5
Naturals	5

PANTS & SHORTS

Basic	6
Double-Pleated	6
Executive Slacks	7
3600 (PT10)	7
Easy-Fit	8
Cook/Food Handler	8
Jean-Cut	9
Jeans	9
Shorts	10

COTTON SHIRTS & PANTS

100% Cotton	11
Wrinkle-Resistant 100% Cotton	11

COVERALLS

Poly-Cotton	12
100% Cotton	12

JUMPSUITS

Poplin	13
Inmate	13

WOMEN’S UNIFORMS

Shirts & Blouses	14
Pants & Shorts	14

SHOPCOATS & LAB COATS

Men’s Shopcoats & Lab Coats	15
Women’s Lab Coats	15

JACKETS

Ike-Style	16
Surcoat	16
Team	17
Quilted Vest	17

USPS APPROVED MEASURING GUIDE

USPS Shirts, Pants, Jackets, Coveralls	18
How To Ensure a Proper Fit	19

Poplin Shirts

Elbow & Regular Sleeve

Permanent Press, 4.25-ounce

65% polyester / 35% cotton

- Soil-release & wickable finish
- SoftWear treatment
- Two button-through pockets
- Convertible collar with stays
- Six-button front with gripper at neck

Left Column

REG.	ELBOW	COLOR
2514	2514E	Sky Blue
2544	2544E	Petrol Blue
2551	2551E	Orange
2552	2552E	Red
2553	2553E	Grey
2554	2554E	Postman Blue
2555	2555E	Light Grey

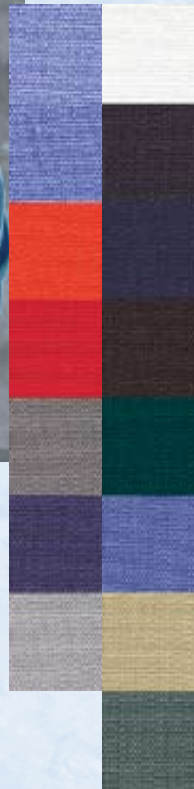
Right Column

2559	2559E	White
2563	2563E	Charcoal Grey
2564/2534	2564E/2534E	Navy/USPS
2565	2565E	Chocolate Brown
2568	2568E	Spruce Green
2574/2524	2574E/2524E	Light Blue/USPS
2575	2575E	Light Tan
2578	2578E	Lagoon Green
2584	2584E	Blue Ford* w/Braid

*see navy swatch



All shirts on this page available in sizes:
S, M, L, XL, 2XL, 3XL, 4XL
some colors stocked in 5XL



Striped Shirts

Elbow & Regular Sleeve

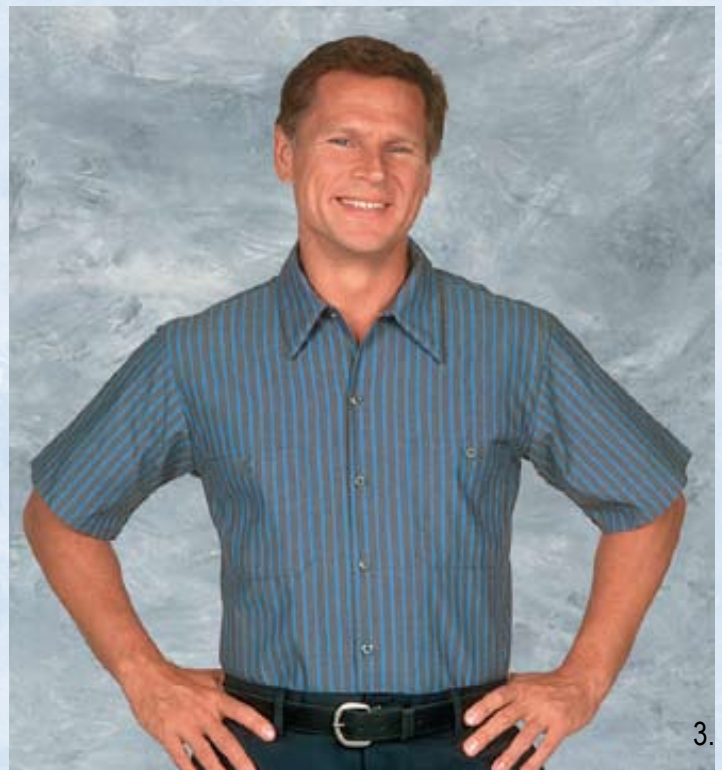
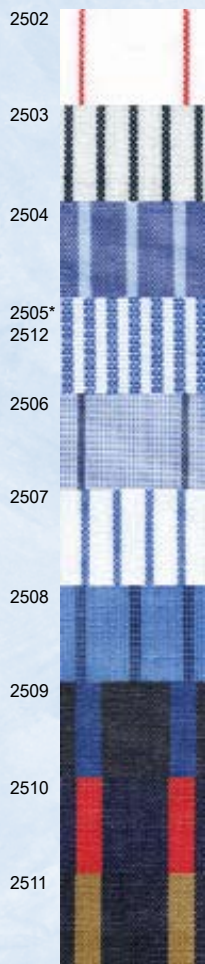
Permanent Press, 4.25-ounce

65% polyester and 35% cotton

- Soil-release & wickable finish
- SoftWear treatment
- Two button-through pockets
- Convertible collar with stays
- Six-button front with gripper at neck

REG.	ELBOW	COLOR
2502	2502E	White/Red Stripe
2503	2503E	White/Charcoal Stripe
2504	2504E	Blue/White Pinstripe
2505	2505E	White/Blue Pinstripe*
2506	2506E	Lt. Blue/Navy Stripe
2507	2507E	White/Blue Stripe
2508	2508E	Med. Blue/Navy Stripe
2509	2509E	Grey/Blue Stripe
2510	2510E	Navy/Red Stripe
2511	2511E	Navy/Khaki Stripe
2512	2512E	White/Blue Pinstripe

*with pocket flaps



Executive Shirts

Cotton-Rich Button-Down Shirts

Permanent Press, 4.25-ounce

60% cotton/ 40% polyester

Regular and Elbow Sleeves

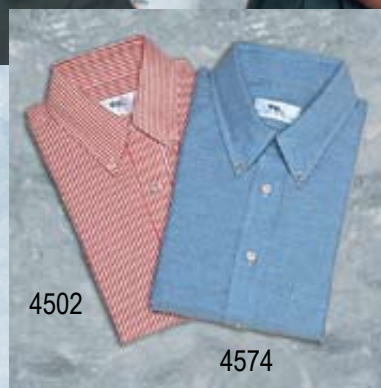
- Yarn-dyed oxford cloth
- Topstitched, lined, button-down banded collar
- Topstitched, lined cuffs with two buttons
- Hemmed, spade-style left breast pocket
- Button-front placket with vertical buttonholes
- Two-piece, topstitched yoke

Neck Sizes: 14-1/2 to 17-1/2

Regular sleeves: 32-33 and 34-35

REG.	ELBOW	COLOR
4502	4502E	Red Stripe
4507	4507E	Blue Stripe
4559	4559E	White
4574	4574E	Lt. Blue

*Classic
Wear*
by GCA™



No-Pocket /Food Handler Shirt



Elbow & Regular Sleeve

Permanent Press, 4.25-ounce

65% polyester and 35% cotton



- SoftWear treatment
- Stainless steel gripper-front
- Lined, one-piece collar, with stays
- One-piece, lined cuffs
- Also available in women's style

Sizes: S, M, L, XL, 2XL, 3XL, 4XL

REG.	ELBOW	COLOR
2594	2594E	Light Blue
2599	2599E	White
5599	5599E	Women's, White



Micro-Checks

Elbow & Regular Sleeve

Permanent Press, 4.25-ounce

65% polyester / 35% cotton



- SoftWear treatment
- Two button-through pockets
- Left pocket has pencil slot
- One-piece collar, lined, with stays
- All-button front, tortoise-shell style buttons

All shirts on this page available in sizes:

S, M, L, XL, 2XL, 3XL, 4XL

REG.	ELBOW	COLOR
2520	2520E	Black/White Check
2521	2521E	Navy/Black Check
2522	2522E	Tan/Black Check

Naturals

Elbow & Regular Sleeve

Permanent Press, 4.25-ounce

65% polyester and 35% cotton



- SoftWear treatment
- Two button-through pockets
- Left pocket has pencil slot
- One-piece collar, lined, with stays
- All-button front with durable melamine buttons
- Matching solid-color buttons

REG.	ELBOW	COLOR
2530	2530E	Grey Stone
2531	2531E	Ocean Blue
2532	2532E	Sand Stone



Basic Pants

Permanent Press, 7.75-ounce twill
65% polyester/35% cotton



- SoftWear treatment
- Plain-front and a relaxed fit
- Two front slack-style pockets
- Two hip pockets, left side with button closure
- Heavy-duty brass ratcheting zipper
- Top-stitched waistband with button closure
- Straight leg profile

Sizes: 26 - 66

STYLE	COLOR
2654	Postman Blue
2656	Tan
2659	White
2663	Charcoal Grey
2664/2624	Navy/USPS
2668	Spruce Green
2675	Chocolate Brown
2680	Black



Double-Pleated Basic Pants



Permanent Press, 7.75-ounce twill
65% polyester/35% cotton

- SoftWear treatment
- Double-pleated front and a relaxed fit
- Two front slack-style pockets
- Two hip pockets, left side with button closure
- Heavy-duty brass ratcheting zipper
- Top-stitched waistband with button closure
- Straight leg profile

Sizes: 26 - 66

STYLE	COLOR
2656P	Khaki
2663P	Charcoal Grey
2664P	Navy
2680P	Black



Executive Slacks (PT38)

Permanent Press, 7.5-ounce brushed twill
65% polyester/35% cotton

- SoftWear, heavily brushed
- Durable Press finish
- Double-Pleated front styling
- Hook and eye closure at waist
- Lined executive style Ro-cap waistband with hidden stitching
- Heavy-duty brass ratcheting zipper
- Slack style front pockets
- Two hip pockets
- Straight leg profile

Softwear
FOR HARD WEAR
by GCA™

Classic
Wear
by GCA™

Sizes: 28 - 56

STYLE	ALT. #	COLOR
4656T	PT38KH	Khaki
4663T	PT38CH	Charcoal Grey
4664T	PT38NV	Navy
4680T	PT38BK	Black

3600 Pants (PT10)

Permanent Press, 7.75-ounce twill
65% polyester/35% cotton

Softwear
FOR HARD WEAR
by GCA™

- SoftWear, lightly brushed
- Plain-front styling and button closure at waist.
- Lined executive style Ro-cap waistband with hidden stitching
- Slack style front pockets with hidden stitching
- Two hip pockets with hidden stitching
- Heavy-duty brass ratcheting zipper
- Slightly tapered leg

Sizes: 26 - 66

STYLE	ALT. #	COLOR
3643	PT10GY	Light Grey
3654	PT10PB	Postman Blue
3656	PT10KH	Khaki
3659	PT10WH	White
3663	PT10CH	Charcoal Grey
3664	PT10NV	Navy
3668	PT10SG	Spruce Green
3675	PT10BN	Chocolate Brown
3680	PT10BK	Black
3684	PT10RB	Royal Blue
3685	PT10TN	Tan



Hidden stitching on waistband and pockets offer dressier styling and a neater appearance.

Easy-Fit Pants

Permanent Press, 7.75-ounce twill
65% polyester/35% cotton *see exceptions



- SoftWear treatment
- Plain-front, button closure at waist
- Elastic at sides of waist
- Two front slack-style pockets
- Two hip pockets, left-side button closure
- Heavy-duty brass ratcheting zipper
- Top-stitched waistband and pockets
- Straight leg

Sizes: 26 - 52

STYLE	COLOR
6656	Tan
6659	White
6663	Charcoal Grey
6664	Navy
6668	Spruce Green
6675	Chocolate Brown
6680	Black
*1664Z	Navy, 8.5-oz. 100% Cotton
*1764	Navy, 7.25-oz. 100% Spun Poly



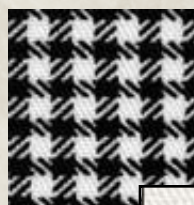
Cook/Food Handler Pants

Permanent Press, 7.25-ounce twill
65% polyester/35% cotton



- SoftWear treatment
- Plain-front, button closure at waist
- Two slack-style front pockets
- Two hip patch pockets
- Heavy-duty brass ratcheting zipper
- Top-stitched waistband with button closure
- Straight leg
- Black and white check design is printed on fabric

Sizes: 28 - 56



STYLE	COLOR
2620K	Black & White Check
2659K	White

